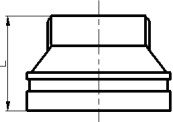


# 240N

Grooved Concentric Reducer With Female Thread



Nominal Size GroovedXThread mm/in	Pipe O.D. mm/in	Working Pressure PSI/MPa	Dimension L mm/in	Certificate
125X40 5X1½	133.0X48.3 5.250X1.900	500 3.45	89 3.50	UL FM
125X40 5X2	133.0X60.3 5.250X2.375	500 3.45	89 3.50	UL FM
125X65 5X2½	133.0X76.1 5.250X3.000	500 3.45	89 3.50	UL FM
125X65 5X3	133.0X88.9 5.250X3.500	500 3.45	89 3.50	UL FM
125X25 5X1	139.7X33.7 5.500X1.315	500 3.45	89 3.50	UL FM VdS
125X32 5X1¼	139.7X42.4 5.500X1.660	500 3.45	89 3.50	UL FM VdS
125X40 5X1½	139.7X48.3 5.500X1.900	500 3.45	89 3.50	UL FM VdS
125X50 5X2	139.7X60.3 5.500X2.375	500 3.45	89 3.50	UL FM VdS
125X65 5X2½	139.7X76.1 5.500X3.000	500 3.45	89 3.50	UL FM VdS
125X80 5X3	139.7X88.9 5.500X3.500	500 3.45	89 3.50	UL FM VdS
125X100 5X4	139.7X114.3 5.500X4.500	500 3.45	89 3.50	UL FM VdS
125X100 5X4	141.3X114.3 5.563X4.500	500 3.45	89 3.50	UL FM
150X20 6X¾	159.0X26.9 6.250X1.05	500 3.45	102 4.00	UL FM
150X25 6X1	159.0X33.7 6.250X1.315	500 3.45	102 4.00	UL FM
150X32 6X1¼	159.0X42.4 6.250X1.660	500 3.45	102 4.00	UL FM
150X40 6X1½	159.0X48.3 6.250X1.900	500 3.45	102 4.00	UL FM
150X50 6X2	159.0X60.3 6.250X2.375	500 3.45	102 4.00	UL FM
150X65 6X2½	159.0X76.1 6.250X3.000	500 3.45	102 4.00	UL FM
150X80 6X3	159.0X88.9 6.250X3.500	500 3.45	102 4.00	UL FM
150X100 6X4	159.0X114.3 6.250X4.500	500 3.45	102 4.00	UL FM
150X15 6X1/2	165.1X21.3 6.500X0.825	500 3.45	102 4.00	UL FM
150X20 6X¾	165.1X26.9 6.500X1.05	500 3.45	102 4.00	UL FM
150X25 6X1	165.1X33.7 6.500X1.315	500 3.45	102 4.00	UL FM
150X32 6X1¼	165.1X42.4 6.500X1.660	500 3.45	102 4.00	UL FM
150X40 6X1½	165.1X48.3 6.500X1.900	500 3.45	102 4.00	UL FM
150X50 6X2	165.1X60.3 6.500X2.375	500 3.45	102 4.00	UL FM
150X65 6X2½	165.1X76.1 6.500X3.000	500 3.45	102 4.00	UL FM
150X80 6X3	165.1X88.9 6.500X3.500	500 3.45	102 4.00	UL FM
150X100 6X4	165.1X114.3 6.500X4.500	500 3.45	102 4.00	UL FM
150X25 6X1	168.3X33.7 6.625X1.315	500 3.45	102 4.00	UL FM
150X50 6X2	168.3X60.3 6.625X2.375	500 3.45	102 4.00	UL FM VdS
150X125 6X5	168.3X141.3 6.625X5.563	500 3.45	102 4.00	UL FM
200X40 8X1½	219.1X48.3 8.625X1.900	500 3.45	127 5.00	UL FM
200X50 8X2	219.1X60.3 8.625X2.375	500 3.45	127 5.00	UL FM VdS
200X65 8X2½	219.1X73.0 8.625X2.875	500 3.45	127 5.00	UL FM
200X65 8X2½	219.1X76.1 8.625X3.000	500 3.45	127 5.00	UL FM
200X80 8X3	219.1X88.9 8.625X3.500	500 3.45	127 5.00	UL FM VdS
200X100 8X4	219.1X114.3 8.625X4.500	500 3.45	127 5.00	UL FM
200X100 8X6	219.1X168.3 8.625X6.625	500 3.45	127 5.00	UL FM