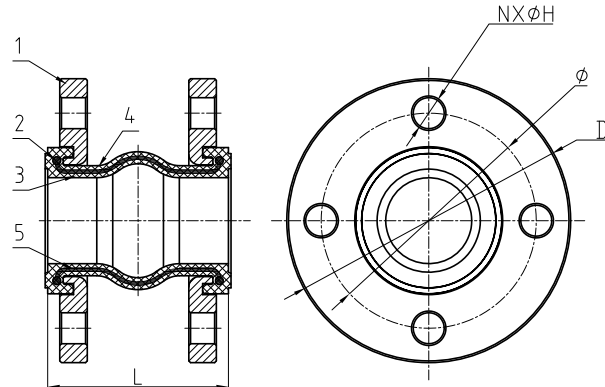


Flexible Rubber Joint Single Sphere Electroplated Carbon Steel Flange Connection (XTQ1RF)



XTQ1RF

- Connection Ends: Flange Drilling to ASME B16.5 CL150
- Working Pressure: 300PSI
175PSI, 200PSI and 250PSI available upon request
- Temperature Range: 0°C - 80°C
- Vacuum Capacity: 700MM/HG



MATERIAL SPECIFICATION

| Part No. | Part | Standard Specification |
|----------|--------------------|-------------------------|
| 1 | Flange | Galvanized Carbon Steel |
| 2 | Reinforcing Ring | Carbon Steel |
| 3 | Rubber (Inner) | EPDM |
| 4 | Rubber (Outer) | EPDM |
| 5 | Reinforcing Fabric | Nylon Fabric |

Note: For special material request other than standard specification, please indicate clearly on the inquiry or order list.

| DN | | Neutral Length(mm) | | | | Axial(mm) | | Transverse Movement(mm) | Angular Deflection Deg. |
|--------|-----|--------------------|-----|-------|---------|------------|-------------|-------------------------|-------------------------|
| Inch | mm | L | D | Ø | N-ØH | Elongation | Compression | | |
| 1 1/4" | 32 | 95 | 115 | 88.9 | 4X15.9 | 6 | 10 | 10 | 25 |
| 1 1/2" | 40 | 95 | 127 | 98.5 | 4X15.9 | 6 | 10 | 10 | 25 |
| 2" | 50 | 105 | 152 | 120.7 | 4X19.1 | 6 | 10 | 10 | 25 |
| 2 1/2" | 65 | 115 | 178 | 139.7 | 4X19.1 | 8 | 15 | 12 | 25 |
| 3" | 80 | 135 | 191 | 152.4 | 4X19.1 | 8 | 15 | 12 | 25 |
| 4" | 100 | 150 | 229 | 190.5 | 8X19.1 | 12 | 20 | 16 | 15 |
| 5" | 125 | 165 | 254 | 215.9 | 8X22.2 | 12 | 20 | 16 | 15 |
| 6" | 150 | 180 | 279 | 241.3 | 8X22.2 | 12 | 20 | 16 | 15 |
| 8" | 200 | 210 | 343 | 298.5 | 8X22.2 | 12 | 20 | 16 | 15 |
| 10" | 250 | 230 | 406 | 362 | 12X25.4 | 14 | 30 | 25 | 8 |
| 12" | 300 | 230 | 483 | 431.8 | 12X25.4 | 14 | 30 | 25 | 8 |
| 14" | 350 | 265 | 533 | 476.3 | 12X28.6 | 14 | 30 | 25 | 8 |
| 16" | 400 | 265 | 597 | 539.8 | 16X28.6 | 14 | 30 | 25 | 8 |
| 18" | 450 | 265 | 635 | 577.9 | 16X31.8 | 14 | 30 | 25 | 8 |
| 20" | 500 | 265 | 699 | 635 | 20X31.8 | 14 | 30 | 25 | 8 |
| 24" | 600 | 265 | 813 | 749.3 | 20X34.9 | 14 | 30 | 25 | 8 |

