

## DRY BARREL FIRE HYDRANT VALVE

Type: SSF

Doc No: DS-901-SSF-01-E-X

### 1.0 PRODUCT OVERVIEW

The Dry barrel fire hydrant Valve is a water supply facility installed on the fire water supply pipe network outside the building. It is mainly used for the fire truck to take water from the municipal water supply network or the outdoor fire water supply network to extinguish the fire. It can also directly connect the water belt and the water gun to extinguish the fire. It's one of the important fire protection facilities for fighting fires.



#### Dimensions:

5-1/4" (DN115X65X65)

#### Design Standard:

AWWA C502

#### Connection Standard:

ASME B16.42

#### Working Pressure:

300PSI, 250PSI, 200PSI, 175PSI

#### Application:

##### Sign Off:

Owner: \_\_\_\_\_ Contractor: \_\_\_\_\_ Engineer: \_\_\_\_\_  
Location: \_\_\_\_\_ Date: \_\_\_\_\_ Approved & Date: \_\_\_\_\_

The Dry Barrel Fire Hydrant Valve is a water supply facility installed on the fire water supply pipe network outside the building, the working temperature is 0℃ -80℃.

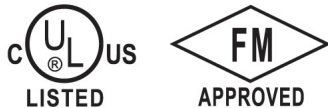
**Material of Matching Products:**

Material is in accordance with ASTM A536, 65-45-12;

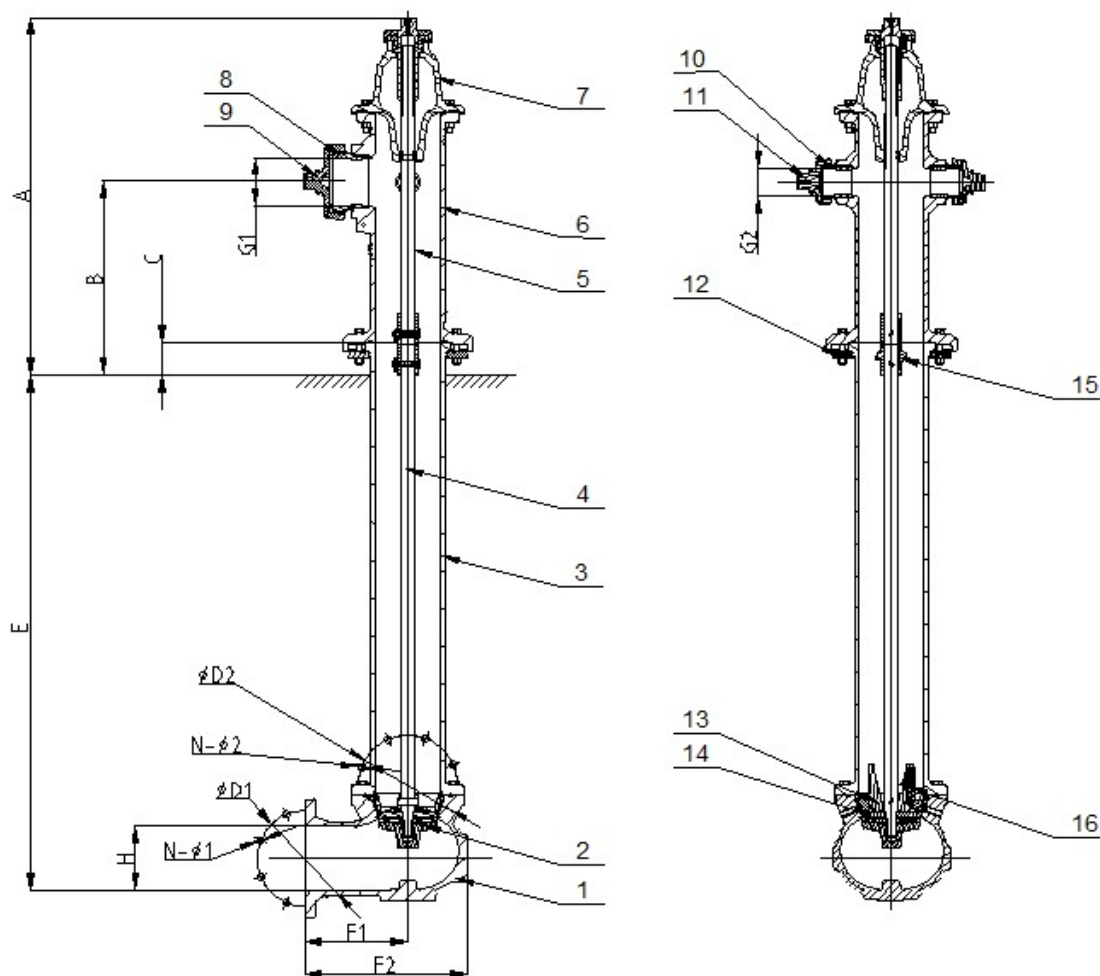
Pipe fittings according to ASME B16.42

**Surface Treatment:**

- ☐ Epoxy power painting (color numbers as RAL3000, etc)
- ☐ Painting (color numbers as RAL3000, etc)
- ☐ Others would be available upon clients' detailed request

**2.0 APPROVAL****3.0 SPECIFICATIONS****Product Sketch:****Sign Off:**

Owner: \_\_\_\_\_ Contractor: \_\_\_\_\_ Engineer: \_\_\_\_\_  
Location: \_\_\_\_\_ Date: \_\_\_\_\_ Approved & Date: \_\_\_\_\_



Part No.	Part	Standard Specification	Options
1	Elbow	ASTM A536,65-45-12	
2	Bottom Plate	ASTM A536,65-45-12	
3	Lower Barrel	ASTM A536,65-45-12	
4	lower Stem	ASTM 1045	ANSI420
5	Upper Stem	ASTM 1045	ANSI420
6	Upper Barrel	ASTM A536,65-45-12	
7	Hydrant Cap	ASTM A536,65-45-12	
8	4.5" Nozzle	C83600	ANSI420
9	4.5" Nozzle Cap	ASTM A536,65-45-12	
10	2.5" nozzle	C83600	ANSI420
11	2.5" nozzle Cap	ASTM A536,65-45-12	
12	half flange	ASTM A126 Class B ;	ASTM A536,65-45-12
13	Drain valve	C83600	
14	Seat Ring	NBR	EPDM

**Sign Off:**

Owner: \_\_\_\_\_ Contractor: \_\_\_\_\_ Engineer: \_\_\_\_\_  
 Location: \_\_\_\_\_ Date: \_\_\_\_\_ Approved & Date: \_\_\_\_\_

15	Stem Breaking Coupling	HT200	ASTM A536,65-45-12
16	Drain valve seat	NBR	EPDM

## 4.0 DIMENSIONS AND PERFORMANCE

### 4.1 Dimensions

DN	Dimension(mm)						
	A	B	C	E	D1	N-Φ1	D2
	846	460	76	1219	Φ241.3	8-Φ22.2	235.00
Inch	N-Φ2	F1	F2	H	G1	G2	
5-1/4"	8-Φ17	245	385	152	4.5"	2.5"	

### 4.2 Strength

Shell Test: 600PSI;

Sealing Test: 600PSI;

Clockwise operation is open, counterclockwise operation is shut.

## 5.0 REFERENCE MATERIALS

Approved certification for Dry Barrel Fire Hydrant Valve

**Sign Off:**

Owner: \_\_\_\_\_ Contractor: \_\_\_\_\_ Engineer: \_\_\_\_\_

Location: \_\_\_\_\_ Date: \_\_\_\_\_ Approved & Date: \_\_\_\_\_