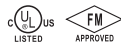


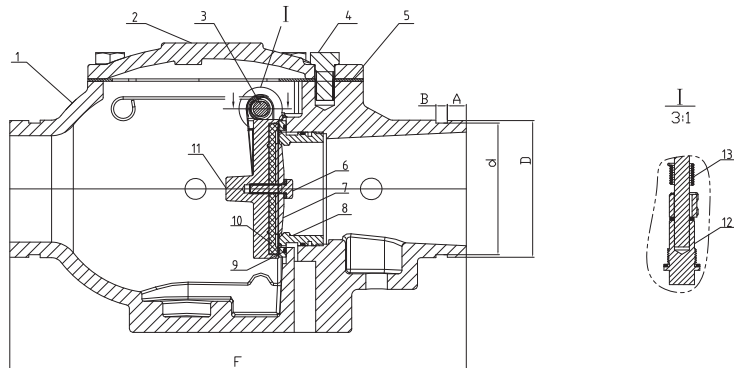
Grooved Wet Alarm Check Valve (ZSFZ8X9)



ZSFZ8X9



- Connection Ends: Groove to AWWA C606
- Working Pressure: 300PSI
200PSI and 250PSI available upon request
- Temperature Range: 0°C- 100°C
- Coating: Painting or Fusion Bonded Epoxy Coating in accordance with ANSI/AWWA C550

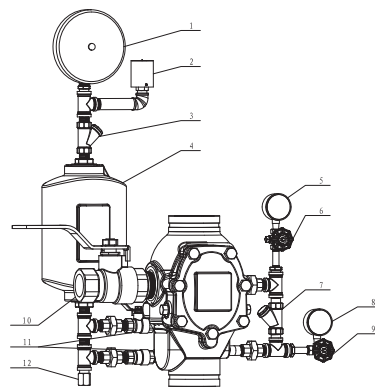


MATERIAL SPECIFICATION

Part No.	Part	Standard Specification	Options
1	Valve Body	ASTM A536, 65-45-12	
2	Bonnet	ASTM A536, 65-45-12	
3	Pin	AISI 304	AISI 316
4	Hex Bolt	Carbon Steel Zinc Plated	
5	Gasket	EPDM	NBR
6	Hex Bolt	AISI 304	AISI 316
7	Gland	Brass H62	
8	Seat	C89833	
9	O-Ring	NBR	EPDM
10	Gasket	EPDM	
11	Disc	C89833	
12	Plug	AISI 304	AISI 316
13	Spring	AISI 321	

Note: For special material request other than standard specification, please indicate clearly on the inquiry or order list.

DN		Dimensions(mm)					
Inch	mm	OD	A	B	∅ d	∅ D	F
3"	80	88.9	15.88	7.93	84.94	88.9	320.3
4"	100	114.3	15.88	9.53	110.08	114.3	382
6"	150	168.3	15.88	9.53	163.96	168.3	406.4
8"	200	219.1	19.05	11.1	214.4	219.1	446



External accessories			
Part No.	Part	Part No.	Part
1	Alarm	7	Check Valve
2	Pressure Switch	8	Pressure Gauge
3	Strainer	9	Ball Valve
4	Decelerator	10	Ball Valve
5	Pressure Gauge	11	Ball Valve
6	Ball Valve	12	Orifice