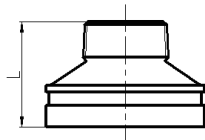


240W

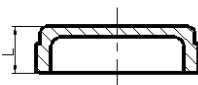
Grooved Concentric Reducer With Male Thread



Nominal Size mm/in	Pipe O.D. mm/in	Working Pressure PSI/MPa	Dimensions L mm/in	Certificate
65X50 2½X2	73.0X60.3 2.875X2.375	500 3.45	64 2.50	UL FM
65X50 2½X2	76.1X60.3 3.000X2.375	500 3.45	64 2.50	UL FM
80X25 3X1	88.9X33.7 3.500X1.315	500 3.45	64 2.50	UL FM
100X50 4X2	114.3X60.3 4.500X2.375	500 3.45	76 3.00	UL FM
200X150 8X6	219.1X168.3 8.625X6.625	500 3.45	127 5.00	UL FM

300

Cap



Nominal Size mm/in	Pipe O.D. mm/in	Working Pressure PSI/MPa	Dimensions L mm/in	Certificate
25 1	33.7 1.315	500 3.45	22.1 0.87	UL FM VdS
32 1¼	42.4 1.660	500 3.45	23.5 0.93	UL FM VdS
40 1½	48.3 1.900	500 3.45	23.5 0.93	UL FM VdS
50 2	60.3 2.375	500 3.45	23.5 0.93	UL FM VdS
65 2½	73.0 2.875	500 3.45	23.5 0.93	UL FM
65 2½	76.1 3.000	500 3.45	25.5 1.00	UL FM VdS
80 3	88.9 3.500	500 3.45	25.5 1.00	UL FM VdS
100 4	108.0 4.250	500 3.45	27 1.06	UL FM
100 4	114.3 4.500	500 3.45	27 1.06	UL FM VdS
25 5	133.0 5.250	500 3.45	27 1.06	UL FM
125 5	139.7 5.500	500 3.45	27 1.06	UL FM VdS
125 5	141.3 5.563	500 3.45	27 1.06	UL FM
150 6	159.0 6.250	500 3.45	27 1.06	UL FM
150 6	165.1 6.500	300 2.07	27 1.06	UL FM
150 6	168.3 6.625	300 2.07	24.5 0.97	UL FM VdS
200 8	216.3 8.516	300 2.07	30.2 1.19	UL FM
200 8	219.1 8.625	300 2.07	30.5 1.20	UL FM VdS
250 10	273.0 10.750	300 2.07	32 1.26	UL FM VdS
300 12	323.9 12.750	300 2.07	32 1.26	UL FM VdS